

iblos-EHD-self-sufficient

Bearing pressure regulation for work machines

IBL·HYDRONIC

... the solution provider

patent in: DE, AT

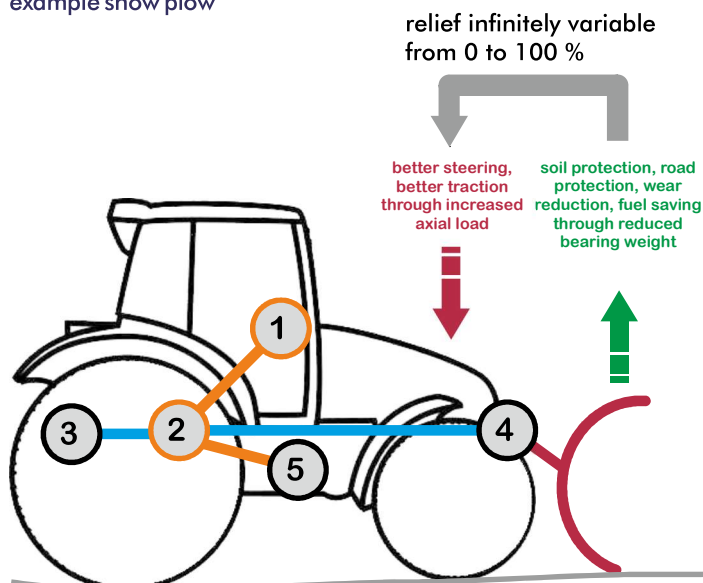


quick · precise · energy-efficient

The patented electro-hydraulic bearing pressure regulation iblos-EHD regulates the tracking force of work devices on the ground or other working surfaces. The iblos-EHD operates energy-efficiently, precisely and quickly. Working a surface with the set force is guaranteed to be exact. The iblos-EHD comes with single or twice-effective cylinders. Furthermore, and depending on how it is integrated, it can apply its force to the work surface actively and in a controlled fashion. The iblos-EHD can be deployed in all current hydraulic systems with a fixed displacement or load sensing pump. The patent system operates self-sufficiently or integrated into iblos controls. Low strain on the hydraulic parts prevents power dissipation and thus minimizes fuel consumption. The device operates highly cost-efficiently and goes easy on our environment.

FUNCTION

example snow plow



Precise

- short response time
- exact copying of working surfaces

Energy-efficient

- load sensing for fixed and variable displacement pumps
- only demands energy when lifting the work device

User-friendly

- graphical, self-explanatory operation
- memory for several device settings
- automated calibration of new devices
- diagnostics and settings via the operating device

Integration

- into the lifting cylinder of the work device
- for EW and DW features
- no interference with hydraulic features of the supporting device
- for fixed and variable displacement pumps
- fixed displacement pump redirects pressure

Equipment

- hydraulic block in 2 sizes for pump flows of up to 120l/min
- control module iblos-IMPact-11
- operating and display device iblos-HMI-OCTO-05 or third party devices via CAN-bus
- wiring harness ready to connect

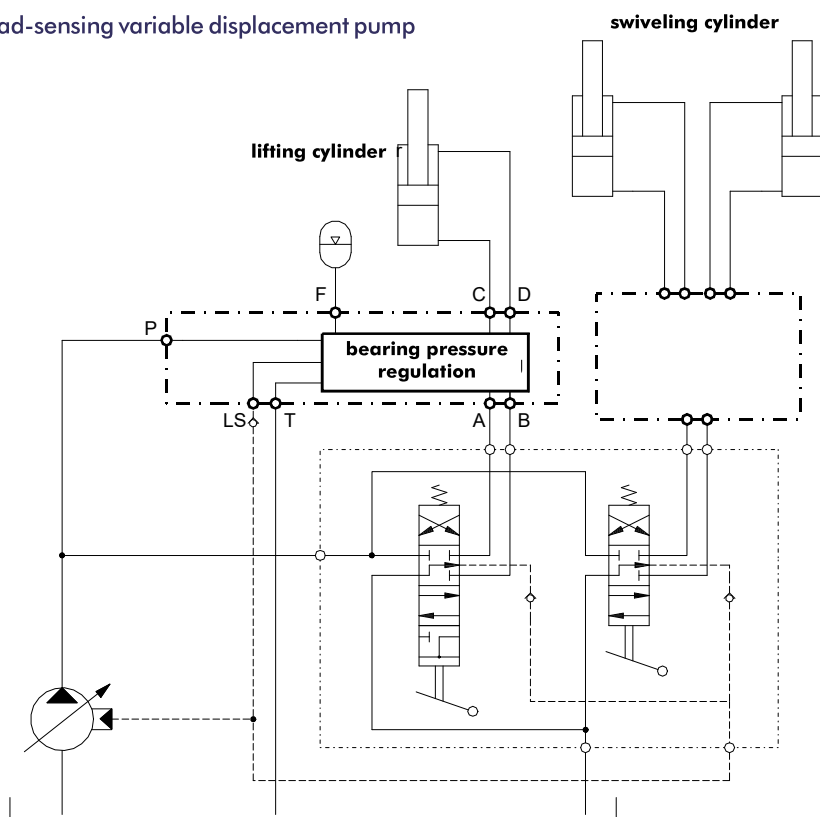
Applications

- mulchers
- mowers
- snow plows
- frontshovels
- road sweepers
- tillage
- cleaning devices

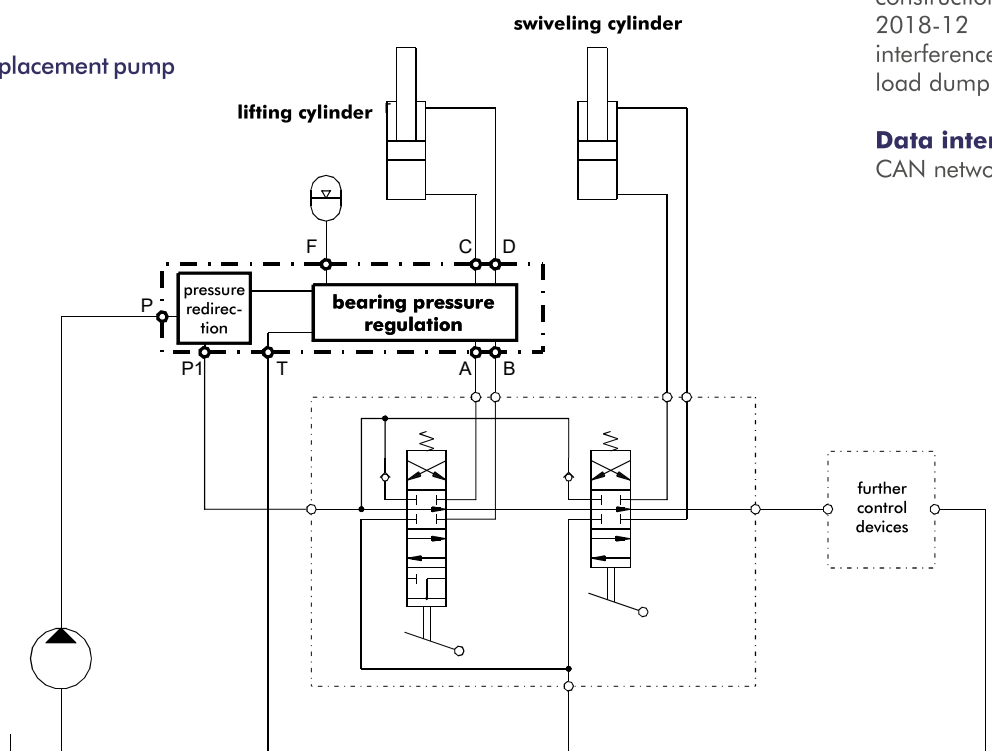
Ideal for retrofitting tractors, equipment carriers and truck.

INTEGRATION

load-sensing variable displacement pump



fixed displacement pump



TECNICAL PROPERTIES

Electrical connention

power supply 12/24 VDC (9 to 32 VDC)
resettable fuse, load dump protection,
suitable for vehicular electrical systems
voltage internally monitored
3-pin agricultural machinery plug

Hydraulic connection

pressure 250bar; fixed and variable
displacement pump
size 060: pump 60l/min; cylinder 30l/min
size 120: pump 120l/min; cylinder 100l/min

Scope of delivery

hydraulics and electronics ready for
connection and including all necessary wiring
Accumulator layout and delivery depends on
the application.

Ambient temperature

-20° C ... +70° C (storage -30°C...+80°C),
non-condensing

Mechanical strength

Vibrations DIN IEC 68-2-6/mobile devices
Continuous shock DIN IEC 68-2- 29/Eb 250-
6-1000/1 (25g)

EMC-Norms

agricultural machines DIN EN ISO 14982:
2009
construction machines DIN EN 13766-1/2:
2018-12
interferences on the line ISO 7637: 2009
load dump ISO 16750-2: 2012-11-01

Data interfaces

CAN network, USB-OTG